



## Limefitt Holiday Park, Patterdale Road, Windermere, LA23 1PA

- Large Three Bedroom 45 x 20 Holiday Lodge
- Situated in the Kirkstone Area of Limefitt Holiday Park
- Extensive Wrap Around Decking
- Private Off Road Parking
- Excellent Condition Throughout
- Private Elevated Position
- Uninterrupted Views of the Fells
- Never Been Rented

**01772 633399**

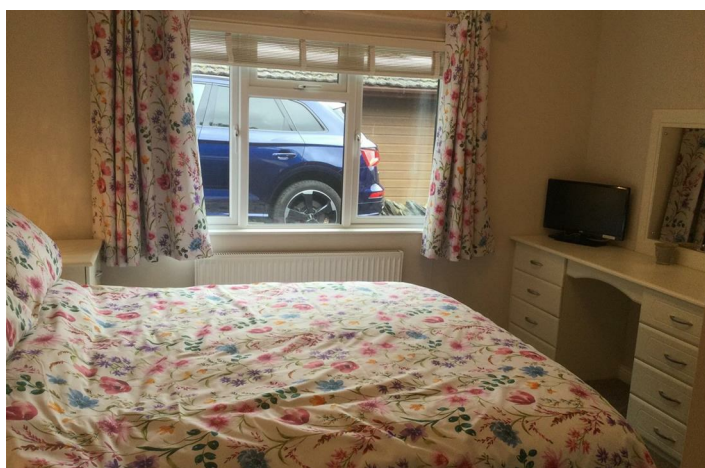
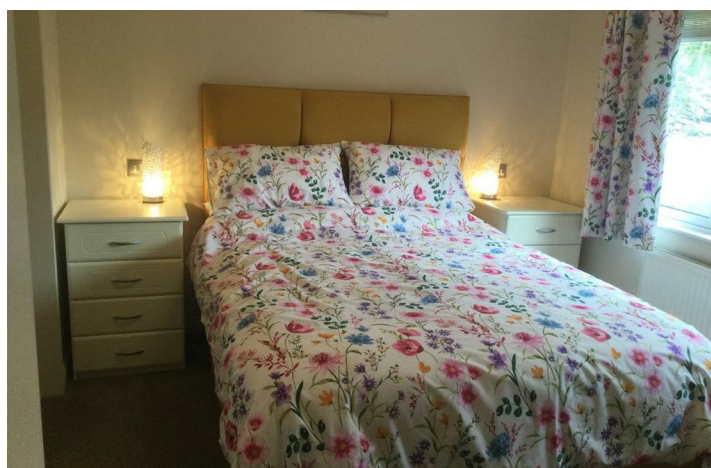
**info@tempoleisure.co.uk**

**www.tempoleisure.co.uk**

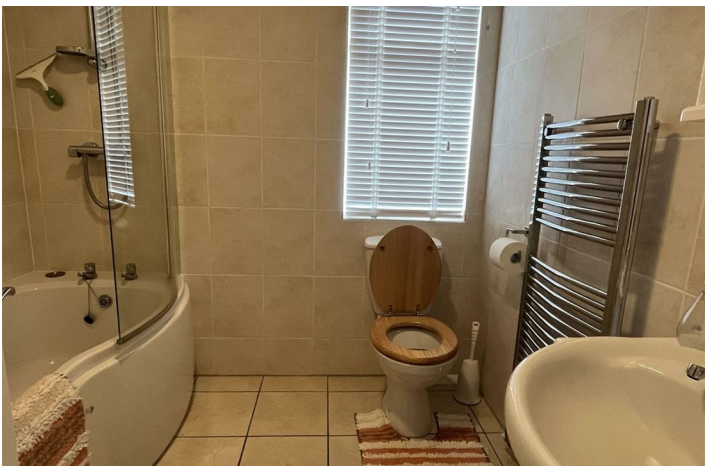
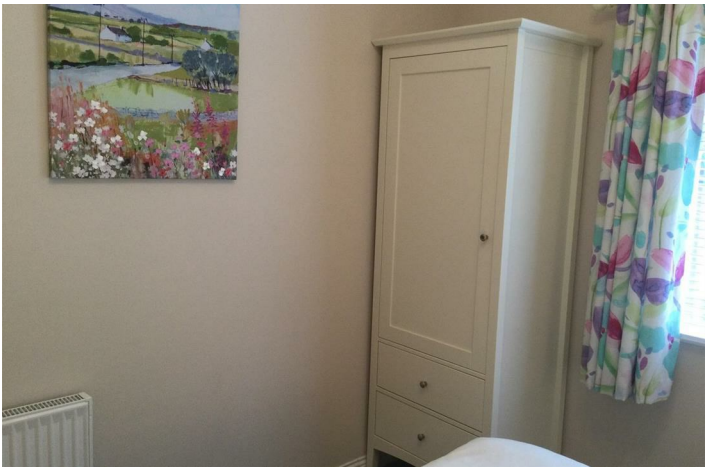
Contact Annette & Team Tempo **NOW**



Tempo leisure are delighted to bring to the market this spacious three bedroom holiday lodge, in excellent condition throughout. Situated in the Kirkstone area of Limefitt Holiday Park, this lodge enjoys a prime, elevated position which is not overlooked and fully private. Located in the stunning Troutbeck Valley - just 3 miles from Windermere and 4 miles from Ambleside. Property briefly comprises: Open Plan Lounge Diner, Kitchen, Double Bedroom with En-Suite, Further Double Bedroom, Twin Bedroom and Main Bathroom. Extensive wrap around decking providing uninterrupted views of the fells, ideal for outside dining and entertaining. Private off road reserved parking. This holiday home has never been rented out and is a credit to its' current owner.







## Viewings

Viewings by arrangement only. Call 01772 633399 to make an appointment.



## Notice

Please note we have not tested any apparatus, fixtures, fitting or services. Interested parties must undertake their own investigation into the working order of these items. All measurements stated in this brochure are approximate and photographs provided are for guidance only. We are advised that the property is subject to site fees.

### **Terms & Conditions Misrepresentation Act 1967:-**

tempoleisure.co.uk looks to ensure that all our sales particulars are accurate and reliable, we believe the above details to be correct but their accuracy cannot be guaranteed and they do not constitute any part of an offer or contract. Any intending purchasers or lessees must satisfy themselves by inspection or otherwise as to the correctness of each statement in these particulars before entering into any formal contract to purchase this property.

### **Arrange A Viewing**

If you are interested in viewing a property through tempoleisure.co.uk please call our team on 01772 633399 or email [info@tempoleisure.co.uk](mailto:info@tempoleisure.co.uk)

### **Property Listing**

If you are thinking of selling your property tempoleisure.co.uk will be more than happy to help, please call our team on 01772 633399 or email [info@tempoleisure.co.uk](mailto:info@tempoleisure.co.uk)

Contact Annette & Team Tempo **NOW**

**01772 633399**  
**[info@tempoleisure.co.uk](mailto:info@tempoleisure.co.uk)**  
**[www.tempoleisure.co.uk](http://www.tempoleisure.co.uk)**